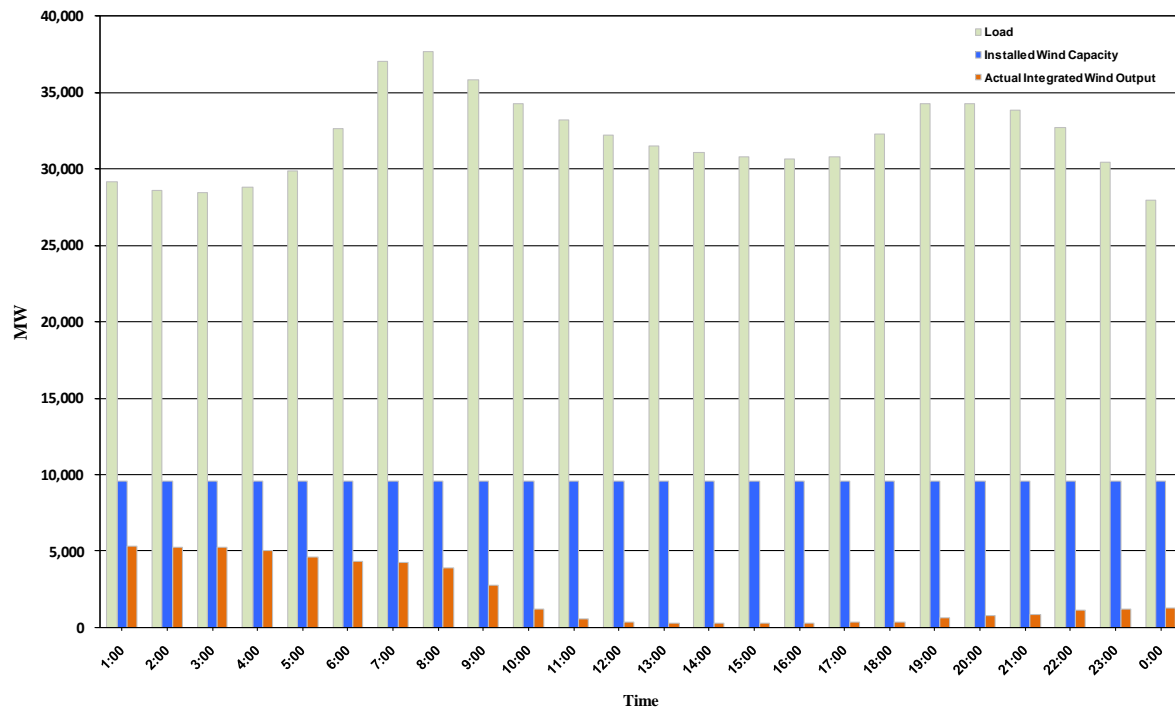




ERCOT Grid Operations Wind Integration Report: 12/02/10

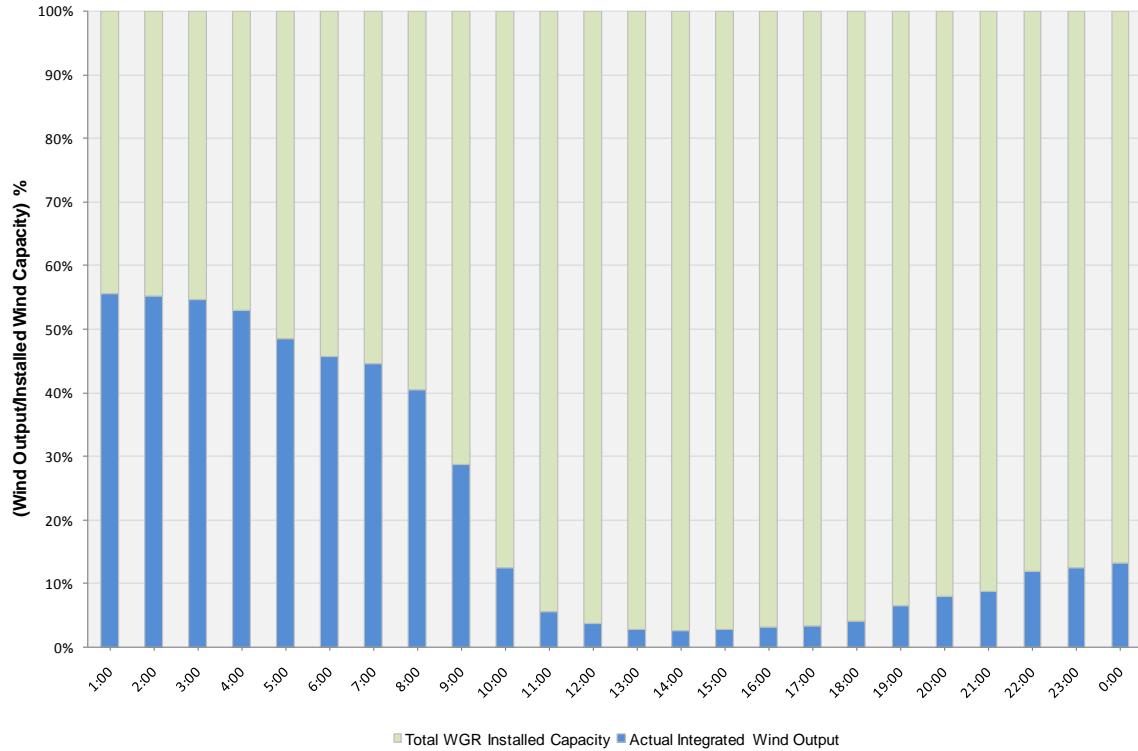
Peak Load	37,667 MW
Load Peak Hour	08
Wind Record 06/12/10	7016 MW
Max Wind value	5450 MW
Wind Peak Hour	00:00:04
Wind Integration %	18.39

Hourly Average Actual Load vs. Actual Wind Output
12-02-2010

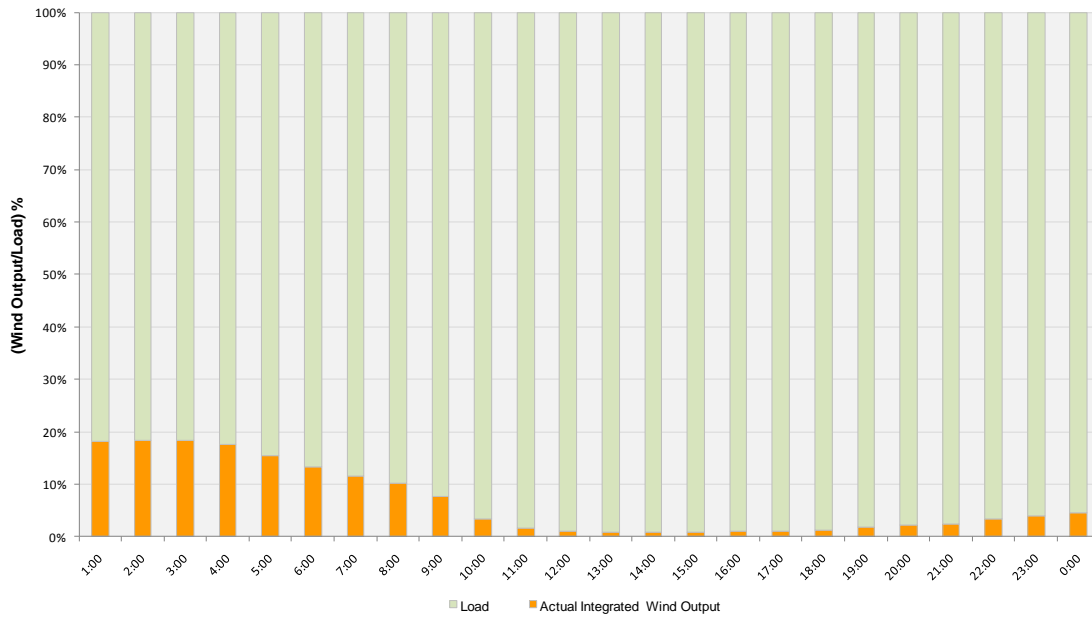




Actual Wind Output as a Percentage of the Total Installed Wind Capacity
12-02-2010



Actual Wind Output as a Percentage of the ERCOT Load
12-02-2010





ERCOT Load vs. Actual Wind Output 11/25/10 - 12/02/10

